



# CATTLE GRIDS

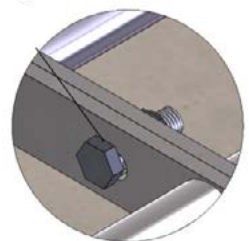
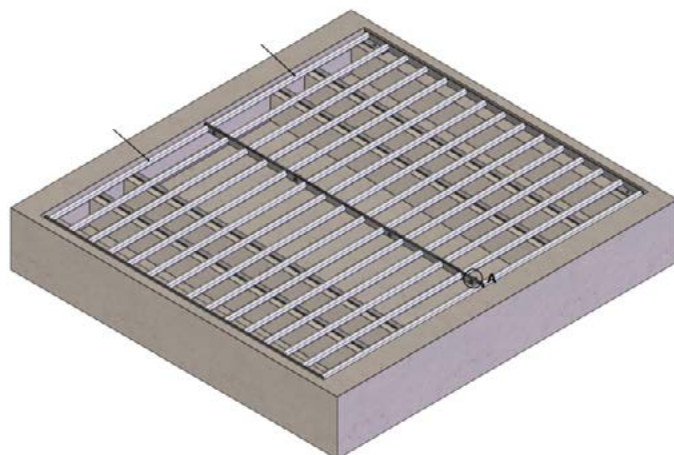
## SPECIFICATION SHEET

Our cattle grids are fully galvanised to BSEN standards and are maintenance free thanks to their high quality and durable nature. Perfect for agricultural and domestic purposes, as well as public access, commons and moorland.

Our cattle grids range in weight capacities, from 10 to 40 tonne, perfect to suit varying levels of traffic and heavier vehicle access.

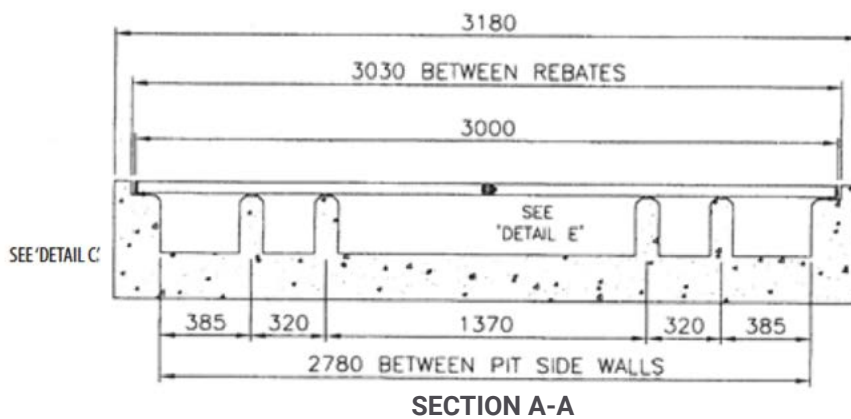
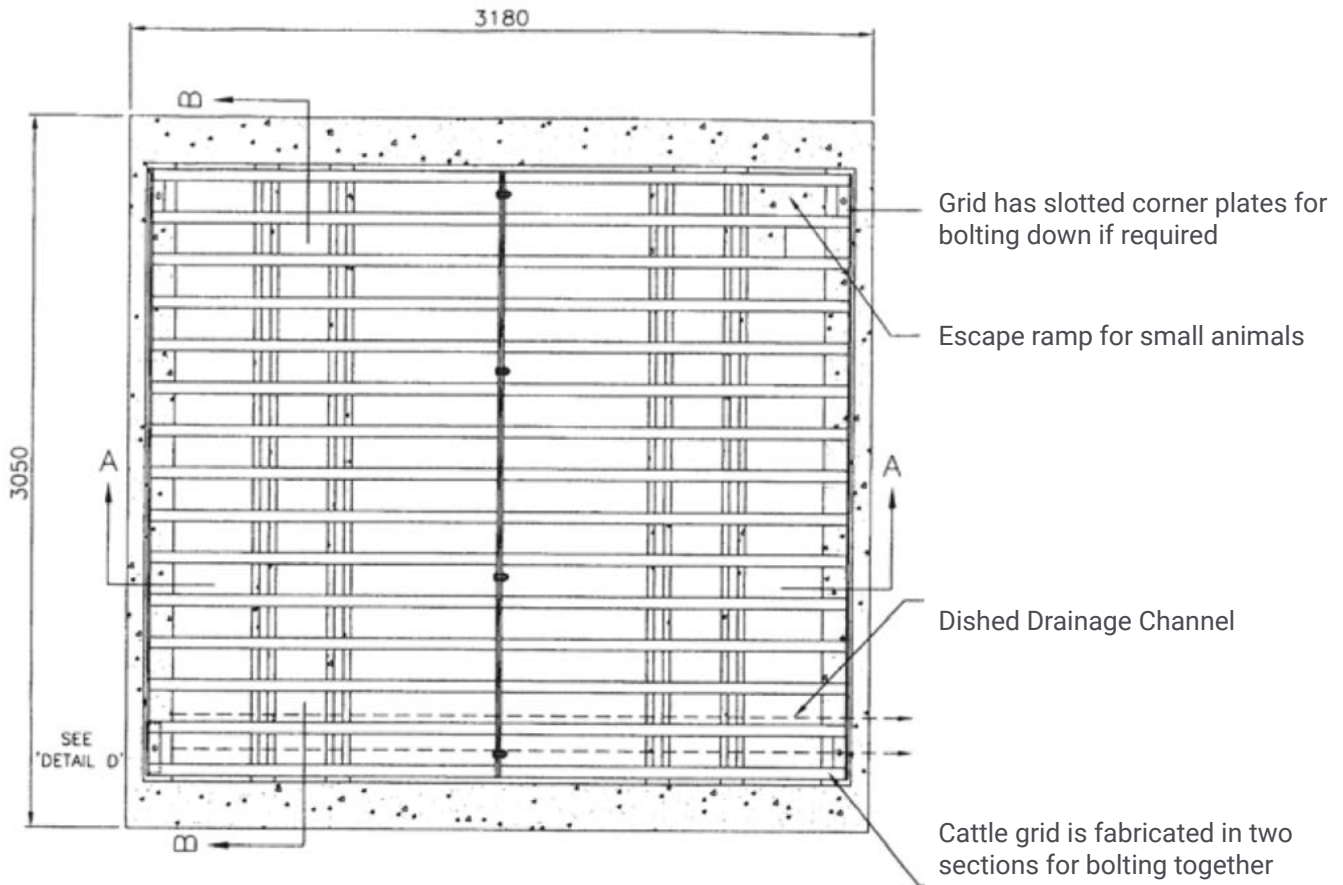
Product	Width (mm)	Depth (mm)	Code
10 Tonne Capacity	3000	2600	TC5100
20 Tonne Capacity	3600		TC5120
30 Tonne Capacity	4050		TC5130
40 Tonne Capacity	4500		TC5140

**Full specifications of each cattle grid mentioned are listed from page two onwards**



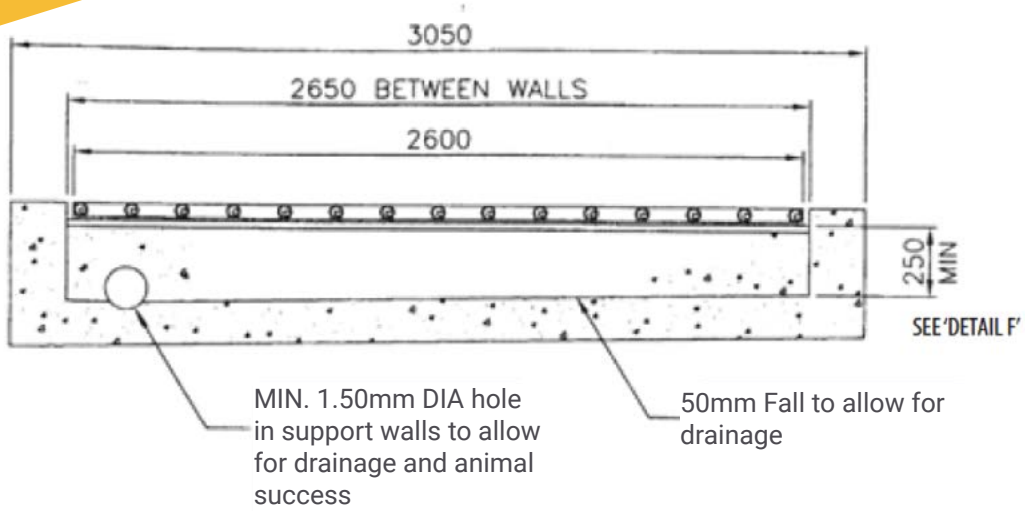
DETAIL A  
SCALE 1 : 2

## 10 TONNE CATTLE GRID

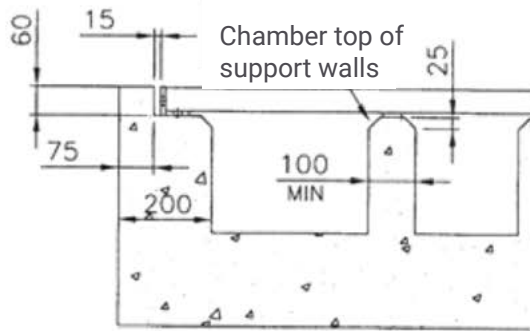


### PLEASE NOTE

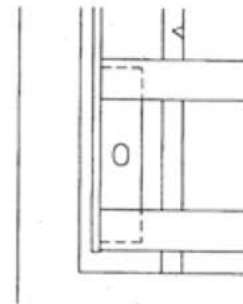
Guard Fencing needs to be erected on both sides of the cattle grid to prevent encroachment by animals and also to position vehicles correctly on the approach to the grid.



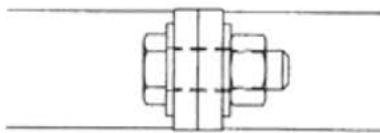
SECTION B-B



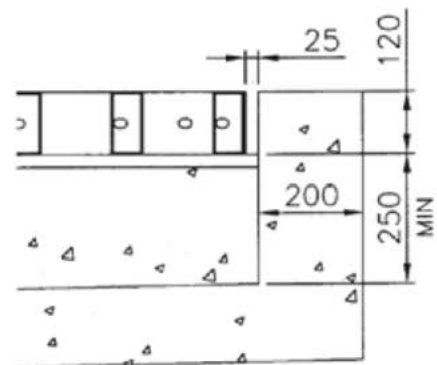
DETAIL - C



DETAIL - D



DETAIL - E

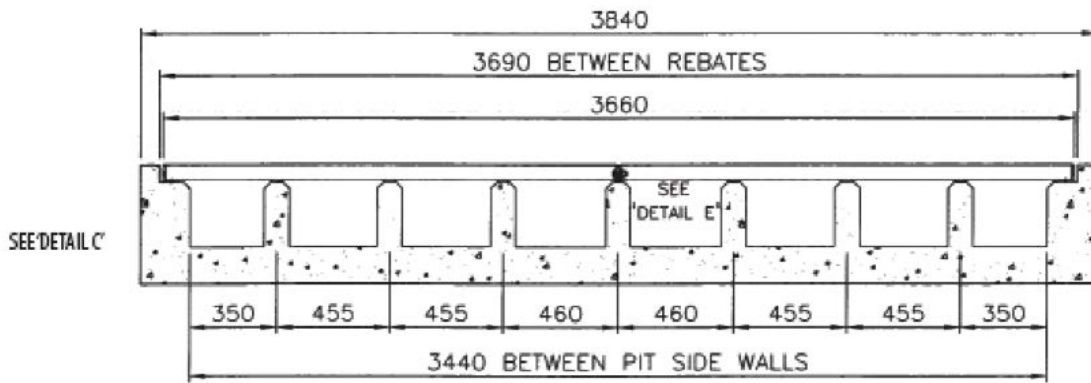
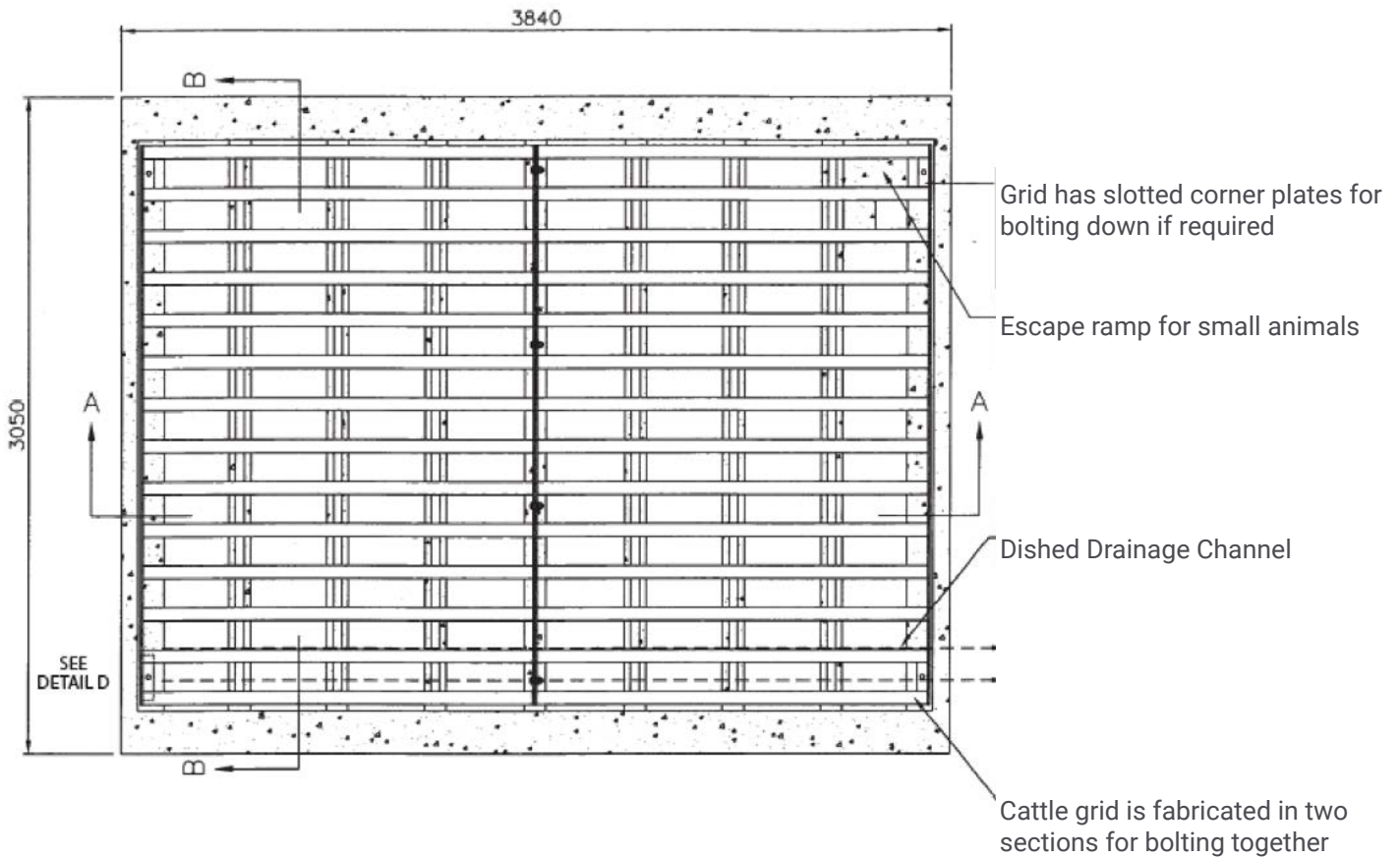


DETAIL - F

**PLEASE NOTE**

Guard Fencing needs to be erected on both sides of the cattle grid to prevent encroachment by animals and also to position vehicles correctly on the approach to the grid.

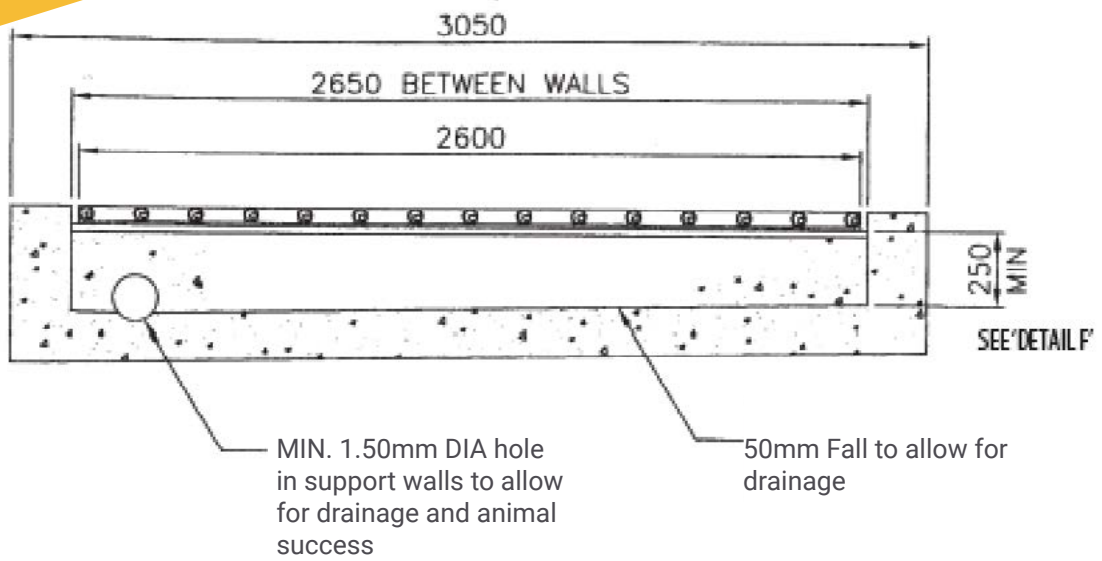
## 20 TONNE CATTLE GRID



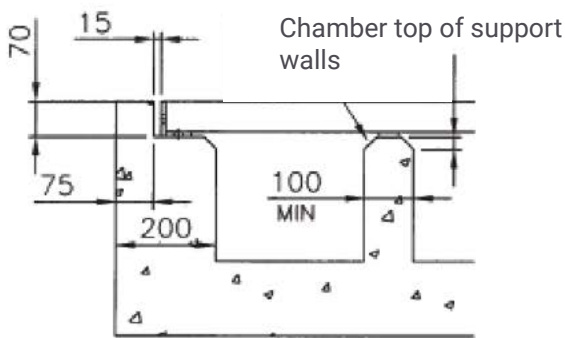
SECTION A-A

**PLEASE NOTE**

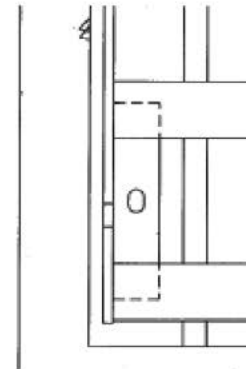
Guard Fencing needs to be erected on both sides of the cattle grid to prevent encroachment by animals and also to position vehicles correctly on the approach to the grid.



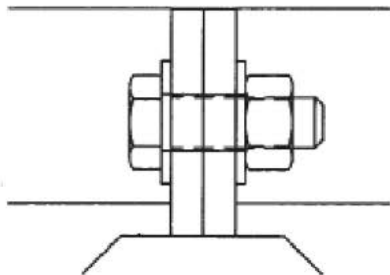
SECTION B-B



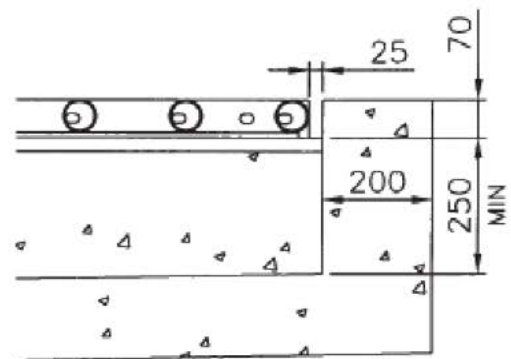
DETAIL - C



DETAIL - D



DETAIL - E

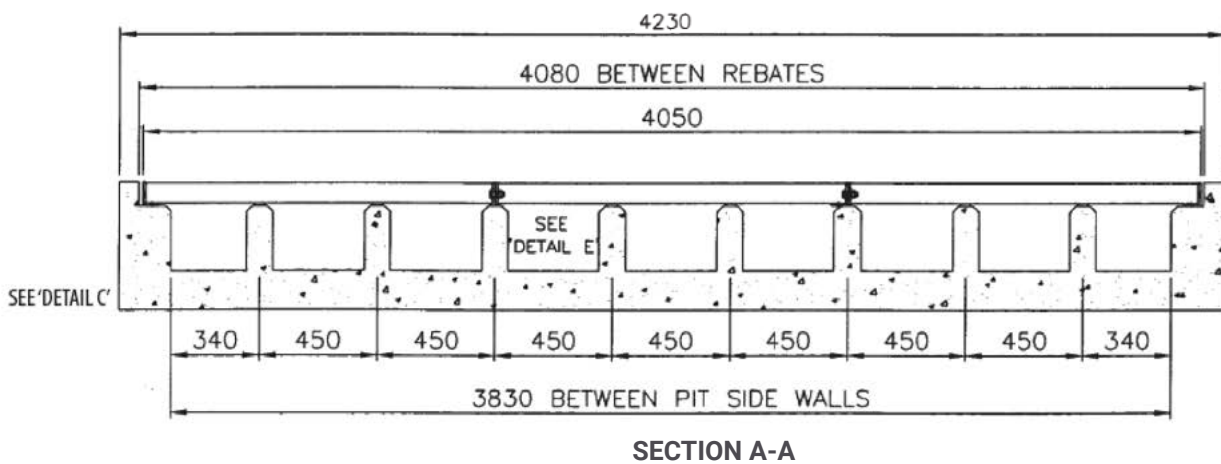
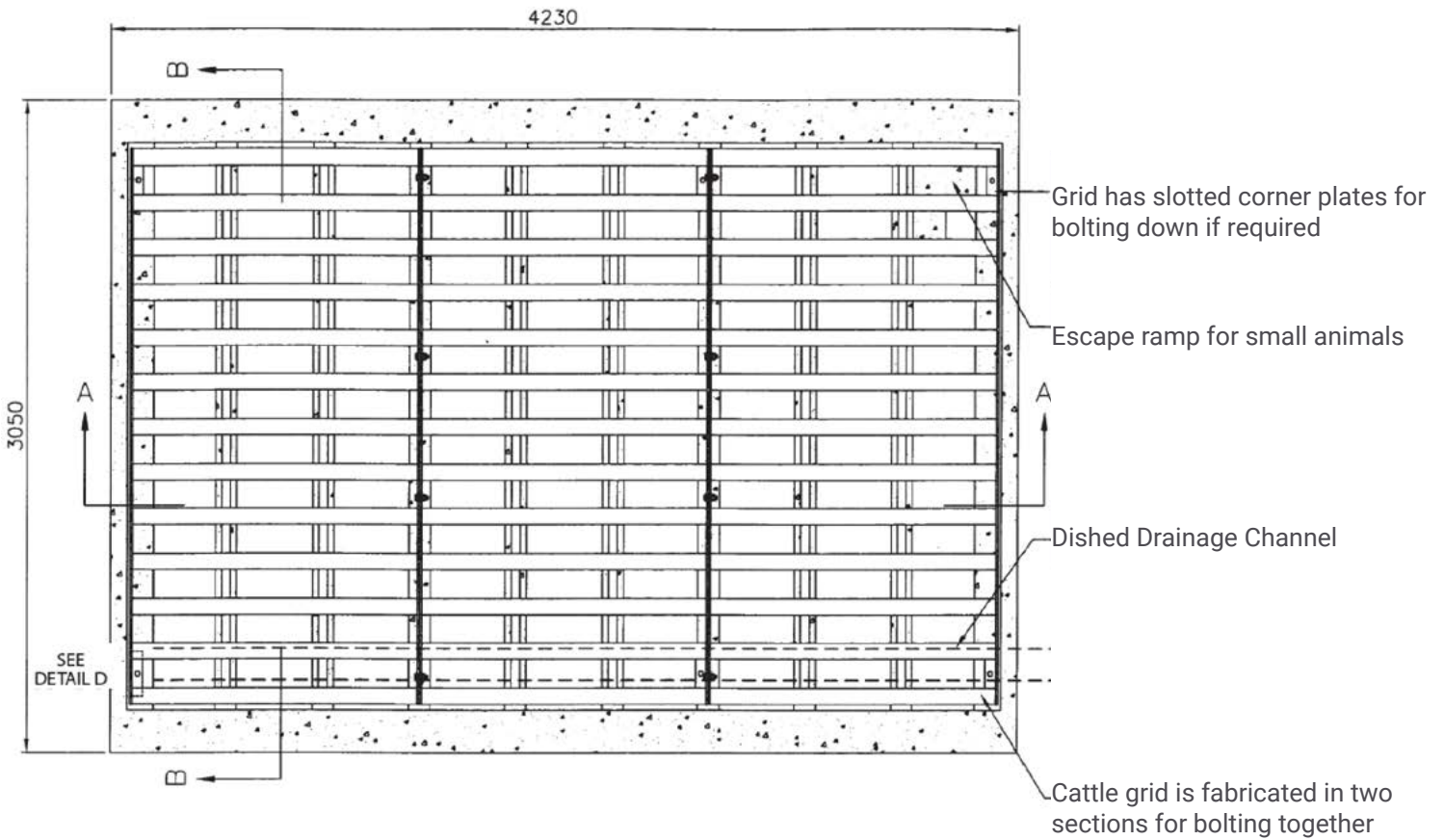


DETAIL - F

**PLEASE NOTE**

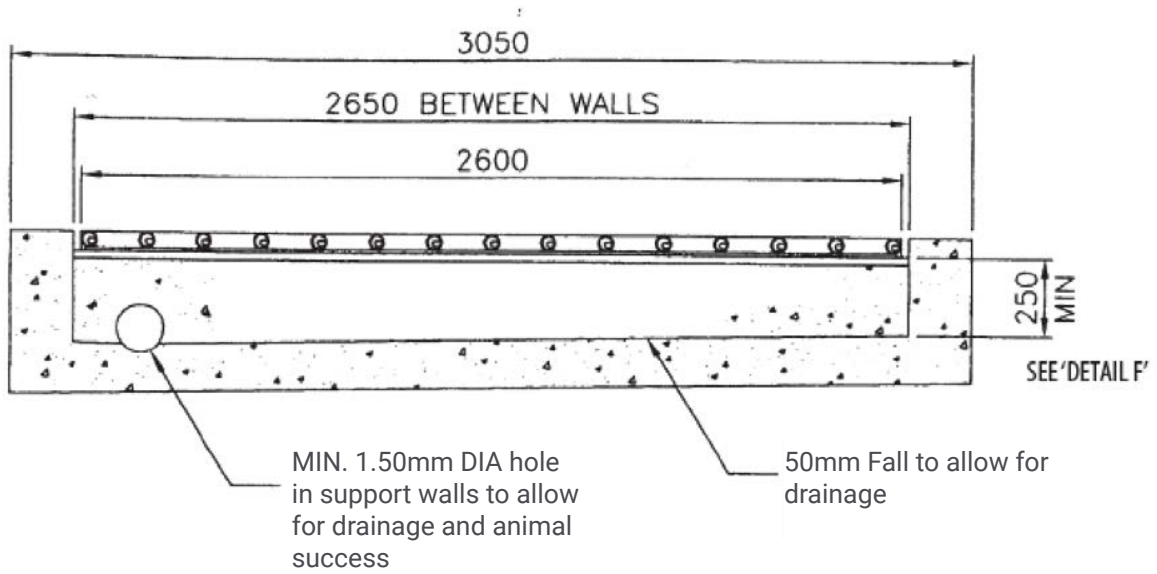
Guard Fencing needs to be erected on both sides of the cattle grid to prevent encroachment by animals and also to position vehicles correctly on the approach to the grid.

## 30 TONNE CATTLE GRID

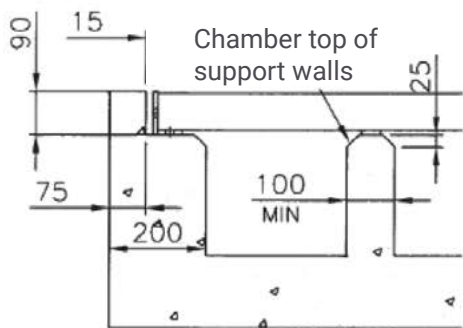


### PLEASE NOTE

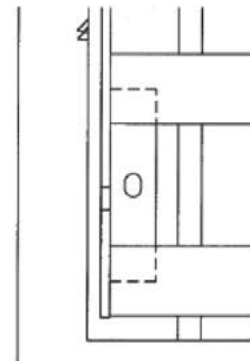
Guard Fencing needs to be erected on both sides of the cattle grid to prevent encroachment by animals and also to position vehicles correctly on the approach to the grid.



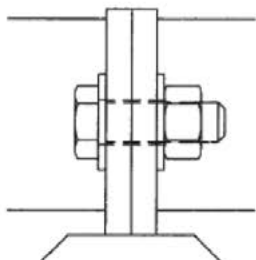
SECTION B-B



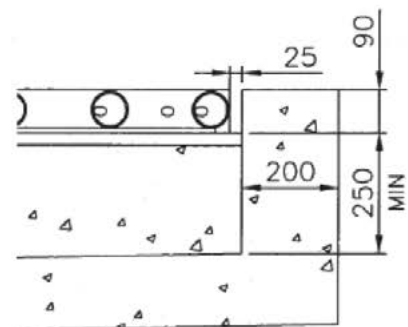
DETAIL - C



DETAIL - D



DETAIL - E

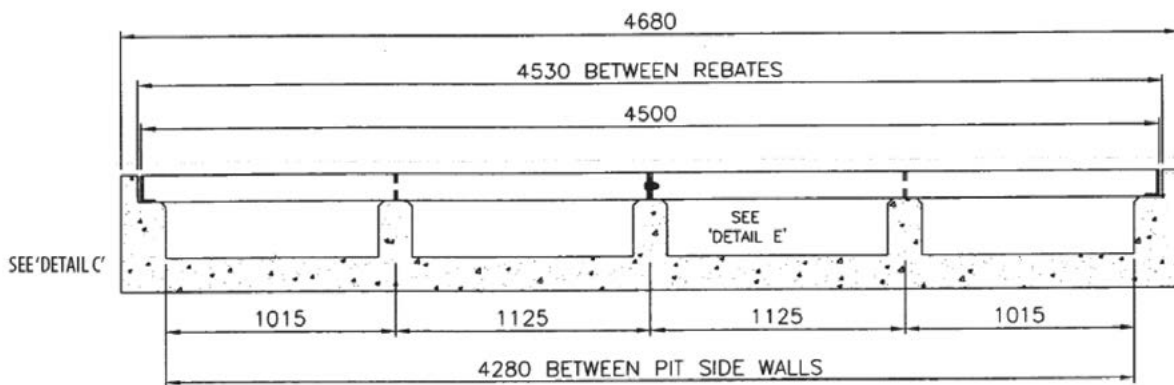
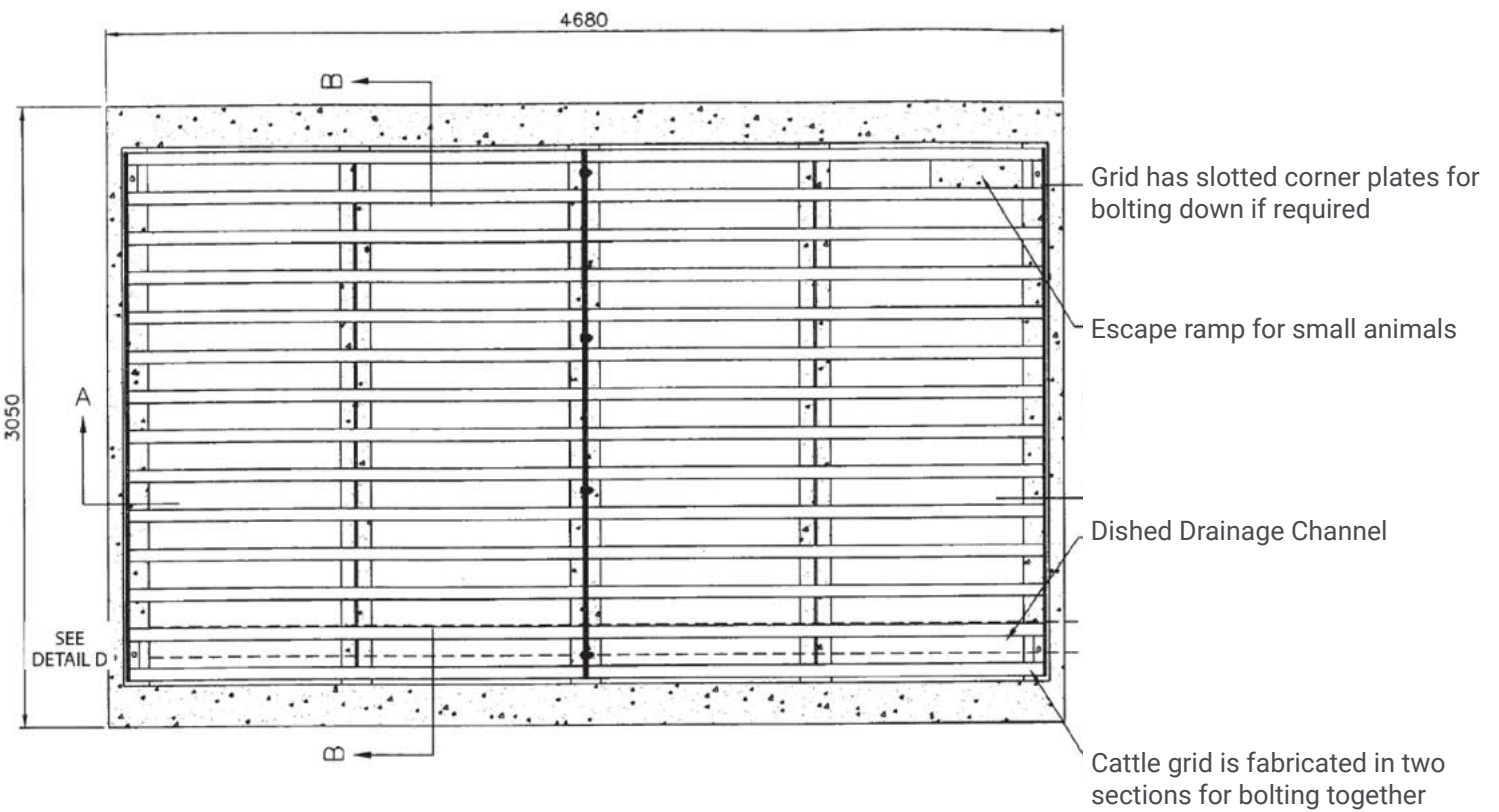


DETAIL - F

**PLEASE NOTE**

Guard Fencing needs to be erected on both sides of the cattle grid to prevent encroachment by animals and also to position vehicles correctly on the approach to the grid.

## 40 TONNE CATTLE GRID

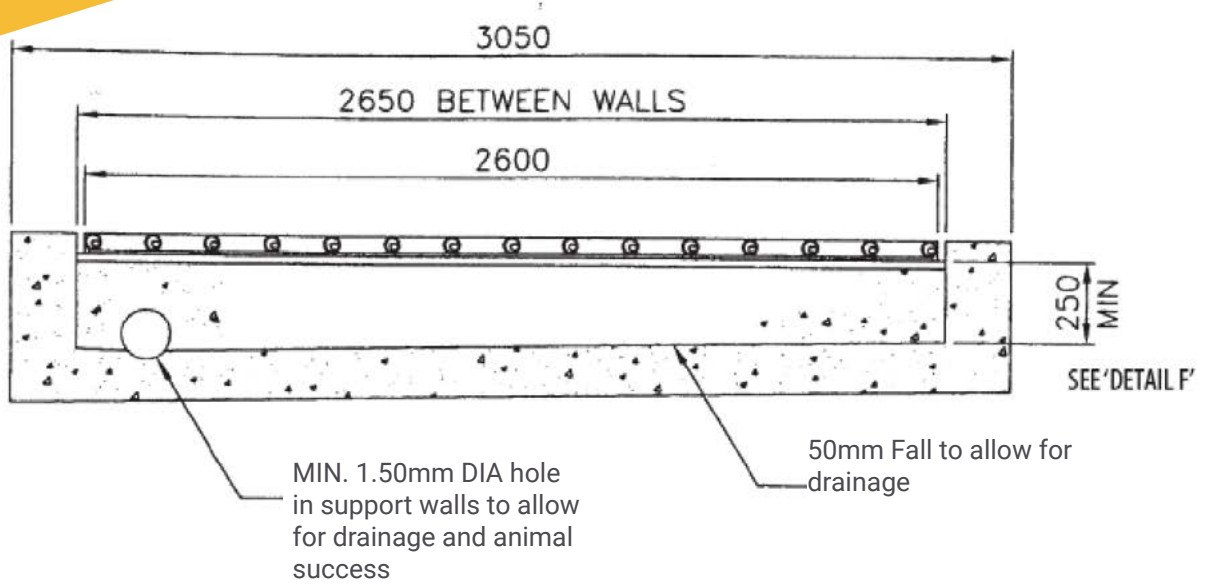


SECTION A-A

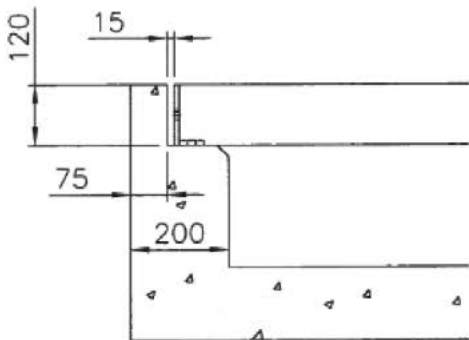
**PLEASE NOTE**

Guard Fencing needs to be erected on both sides of the cattle grid to prevent encroachment by animals and also to position vehicles correctly on the approach to the grid.

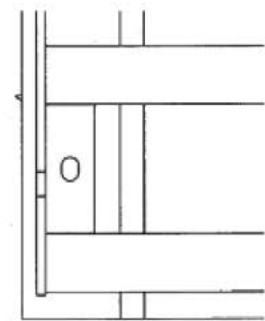




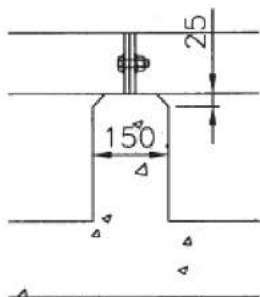
SECTION B-B



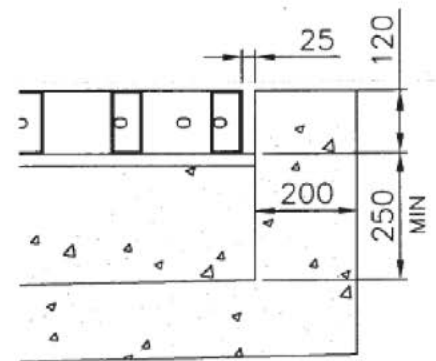
DETAIL - C



DETAIL - D



DETAIL - E



DETAIL - F

**PLEASE NOTE**

Guard Fencing needs to be erected on both sides of the cattle grid to prevent encroachment by animals and also to position vehicles correctly on the approach to the grid.