

# XFENCE OTTER SPECIFICATION SHEET



This predator otter Xfence has been designed to protect inland fisheries and facilitate highway exclusion.

This type of fence is produced to a very high specification, which makes it particularly suitable for commercial and government sectors. Shorter heights and lighter gauges, coupled with electric fencing can be more cost effective for private enterprises.

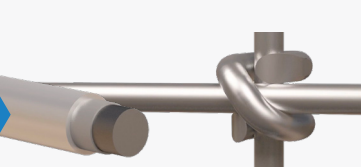
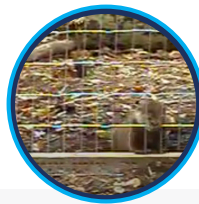
### Benefits

- Superior alu/zinc coated wire, lasts 3-4 longer than galvanised wire
- Premium primary wires only used in Xfence fabricated netting
- Consistent superior high tensile strength wires only
- Greater rigidity due to the one-piece vertical wires
- Smoother and safer non-abrasive forged X knot
- Proven in the field since its conception in 2007
- Easier to install, almost self-supporting
- Save on both labour and posts
- Longer maintenance free life
- Guaranteed to last
- Made in New Zealand by the specialists in high tensile fencing
- Distributed nationally by the UK's leading fencing supplier

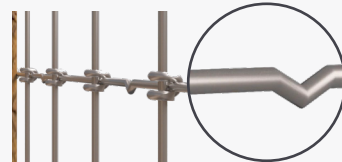


### QUALITY/ STRENGTH OF XFENCE

Watch video at [www.youtube.com/watch?v=VxrEqM3flsA](http://www.youtube.com/watch?v=VxrEqM3flsA)



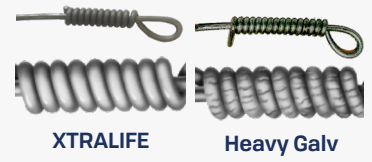
- Manufactured from highest quality primary metals
- 95% Zinc 5% Aluminium
- XTRALIFE coating 24% stronger knot
- Smooth animal friendly abrasive free design forged X knot



- Tension curves absorb any pressure from climatic change or livestock pressure. Reduce by 50% for visible tensioning
- 450mm Pre-stripped ends, speeds up tying off time



- One piece uncut vertical wire
- Acts like its own intermediate, provides real strength & rigidity to the fence, almost self supporting
- Makes installation quicker



- Xtralife coating makes the wire more ductile, easier to work
- Resists cracking when tying off, unlike some heavy galvanised wire

Real return on your investment, not all wire is the same, why gamble?



Specification	Horizontal Wires	Vertical Spacings (cm)	Height (cm)	Roll Lengths (m)	Code
<b>Otter</b>					
XLHT23-240-5	23	5	240	50m	F2463 (Light)
XHT19-180-5	19	5	180	50m	F2456 (Heavy)
XLHT6-50-5	6	5	50	100m	F2428 (Light)
XHT13-125-5	13	5	125	50m	F2408 (Heavy)



**XLHT23-240-5** (Bottom hinged)

One piece net  
Popular design when there is good access to the fence line

**XHT19-180-5 apron** (Heavy - No hinge)  
**XLHT6-50-5 apron** (Optional)

Two piece net option  
Heavier net option for high pressure areas

**XHT13-125-5** (Top hinged)  
**XLHT6-50-5 apron** (Option 2)

Two piece net  
Easier to install where access is restricted

