

PLASTIC LAND DRAINAGE SPECIFICATION SHEET

Plastic land drainage pipe is a modern replacement for clay pipes and has been universally and effectively used for over thirty years.

Perforated and non-perforated options, in a range of pipe diameters, 60-160mm.

Perforated land drainage

- Principally used to alleviate water logged fields, lawns and gardens.
- The plastic drain is laid in a permeable stone enclosure allowing the water to filter through to the plastic pipe which then directs the water to the designated outlet.

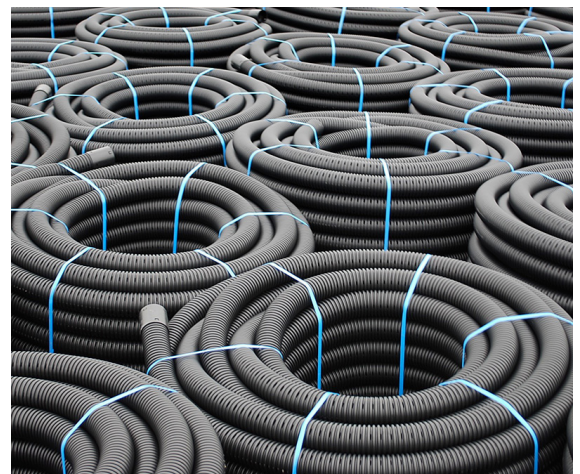
Non-perforated land drainage

- Commonly used under gateways or when filling in a ditch.

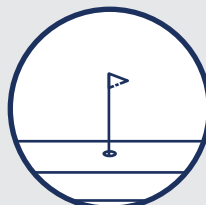
** Please note – Various sizes available, dependent on the severity of the problem. Membrane can be added to the pipe particularly for fine soil types to prevent pipe blockage. Perforated pipe 60mm x 150m Also used in the construction of riding arenas.*

Benefits

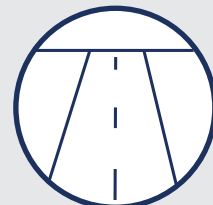
- Strong and flexible
- Fast installation
- Provides excellent water flow
- Kitemarked to BS 4962:1989, License No. KM557607
- Manufactured from high quality rHDPE
- Tightly wound coils that enables easy stacking and handling



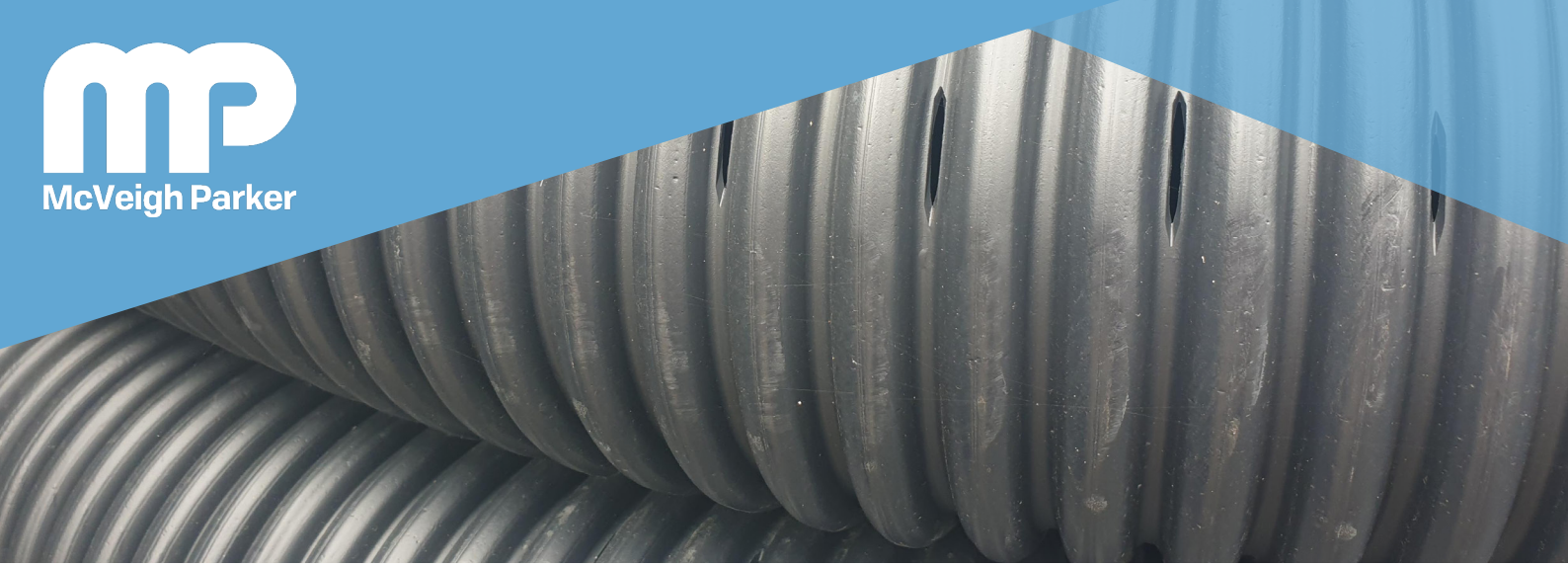
AGRI



SPORTS

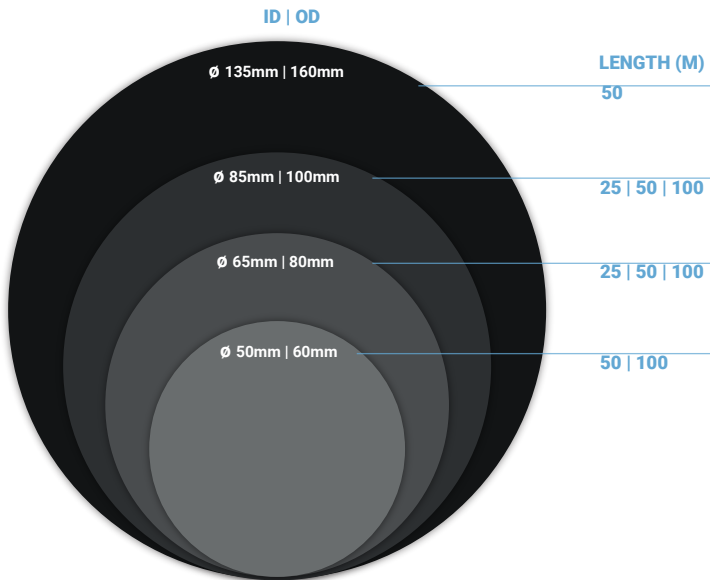


CIVILS



PLASTIC LAND DRAINAGE PIPE SPECS.

Product Range



Inside Diameter (ID)	Outside Diameter (OD)	Length (m)	Finish	Code
135mm	160mm	50m	Perforated	LDP164
			Non-perforated	LDP160
85mm	100mm	25m	Perforated	LDP101
			50m	Non-perforated
		100m	Perforated	LDP100
			Non-perforated	LDP105
65mm	80mm	25m	Perforated	LDP081
			50m	Perforated
		100m	Perforated	LDP080
			Non-perforated	LDP085
50mm	60mm	50m	Perforated	LDP062
			150m	Perforated
		Non-perforated	LDP061	

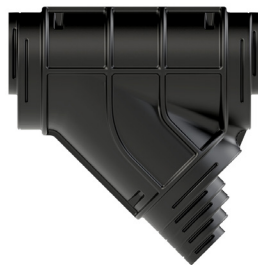
Fittings and Accessories



Multi Branch

Sizes (mm)

60 - 100



Maxi Branch

Sizes (mm)

100 - 160



Connectors

Sizes (mm)

60 | 80 | 100 | 160



Reducers

Sizes (mm)

100 - 60



Stock code	LDP065
Nominal Size (OD/ID)	63mm/50mm
Length	50 metres
Type	Electric cables
Colour	Black
Standards	Class 3, Kitemarked, BS EN 61386-24
Duct Material	High Density Polyethylene (HDPE)

FLEXI TWIN DUCTING WITH DRAWCORD & COUPLER

50M COIL - BLACK (50MM IN DUCT / 63MM OUT DUCT)

This 50mm ID / 63mm OD twinwall ducting comes in a 50mtr coil with a factory fitted drawstring, complete with one coupler to connect multiple coils together.

The duct is black in colour and stamped 'Electric Cable Duct' due to its purpose for electricity cables underground. Made from HDPE, its flexible & lightweight which is great for transportation.

Twinwall MetroDuct has two walls. The internal wall is smooth allowing cables/pipes to be pulled through easily and prevent snagging, whereas the external wall is corrugated which can withstand high compressive forces and gives added strength during installation.

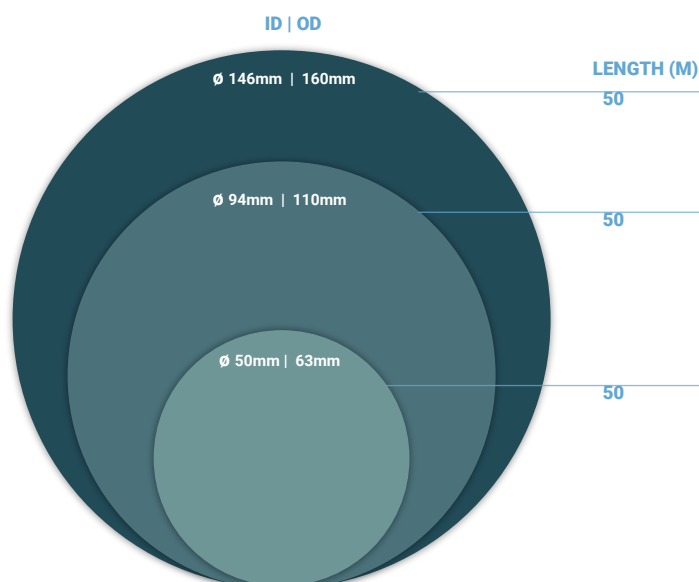
Flexible ducting allows manoeuvrability which is a great advantage over rigid ducting. This can allow for small obstacles to be avoided or required changes of direction to be achieved, without needing additional fittings which can save cost and time.

Kitemarked certified to BS EN 61386-24 and manufactured in the UK. It is compliant with Class 3 specification and at ambient operating temperatures has a 450kN compression performance. Anticipated service life of the system is in excess of 50 years.

If you plan to run any type of service underground, it should be running inside a duct system. A duct is designed to protect the service cable or pipe from damage and alert others to the presence of duct in the ground.

If this is your first time installing, we would always recommend attaching a second drawcord to your cable/ pipe as this will enable you to easily install additional services at any point in the future, if required.

Black Ducting c/w Draw String



Inside Diameter (ID)	Outside Diameter (OD)	Length (m)	Finish	Code
146mm	160mm	50m	Non-perforated	LDP075
94mm	110mm	50m	Non-perforated	LDP070
50mm	63mm	50m	Non-perforated	LDP065

