

AQUAMAT II PASTURE PUMP

SPECIFICATION SHEET

The Aquamat allows cattle and other livestock to be completely fenced away from streams, ponds and springs for TOTAL EXCLUSION from the water source. The Aquamat is ideally suited for projects involving livestock fencing for restoration and re-vegetation or catchment sensitive areas.

Livestock are provided cleaner water, and in many cases, fencing livestock away from streams allows for improved livestock management. The Aquamat is also ideal in situations in which it is desirable to fence cattle out of a water source such as a pond or spring.

The pump is a nose pump operated by cattle. As the animals drink from the pump bowl, they push against a lever, which in turn operates a piston and diaphragm which pumps more water from the stream. It should be positioned in the field by the watercourse, then fixed to a base such as sleepers.

Complete kit consists of

- 1 x Aquamat Nose Pump Mk II
- 1 x Filter basket
- 1 x 7m reinforced flexible hose

Protective fencing and sleeper stand or similar required. Then all you need is the watercourse.

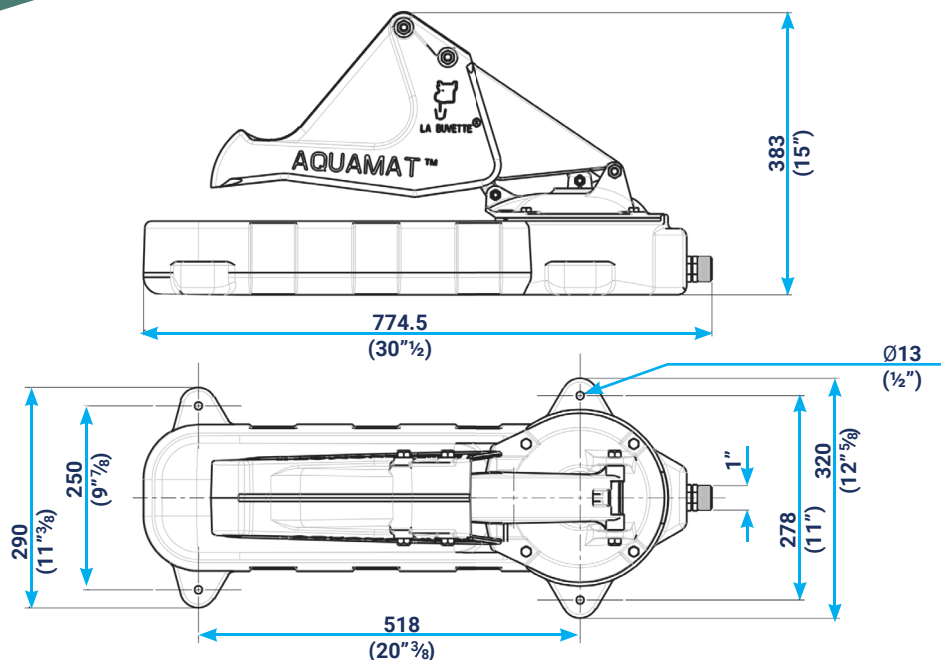


Features

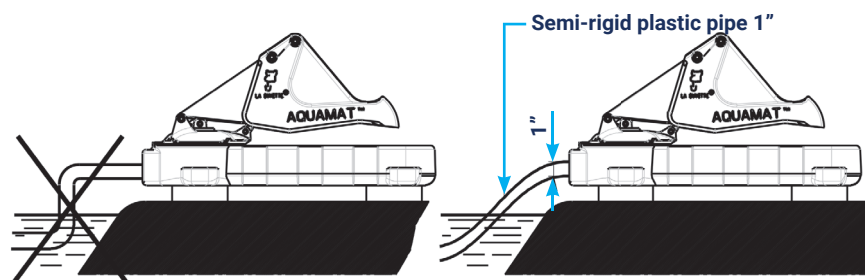
- Ideal for livestock and horses
- Protects river banks and water courses
- The diaphragm pump supplies constant fresh clean water on demand from its natural source
- Low cost solution for those without mains water or in catchment sensitive areas
- Tough polypropylene trough and steel mechanism, rust and UV resistant
- Smooth pump action, easily operated by cattle, horses and calves
- Provides 7 metres vertical lift or 70 metres horizontal lift
- Dispenses 0.5l with each pump lever action
- Suited to strip grazing or temporary paddocks
- Livestock learn almost immediately how to pump
- Minimal moving parts, reduces risk of any failures
- Quick installation time, approx. 20 mins
- Can supply 15-20 head of cattle
- Size: 775mm (L) x 320mm (W) x 383 (H)
- Lightweight and easy to relocate at just 11.4kg
- Trough Capacity 1 litre
- No power required

(Maximum lift: 23 vertical feet. For each unused foot of vertical lift, the pump can pull 10 feet horizontally. For example, if 10 foot of vertical lift is needed, then the AQUAMAT would be able to pull an additional 13 times 10 or 130 feet horizontally)

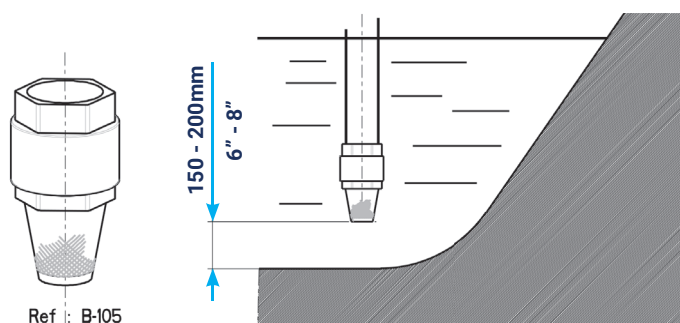




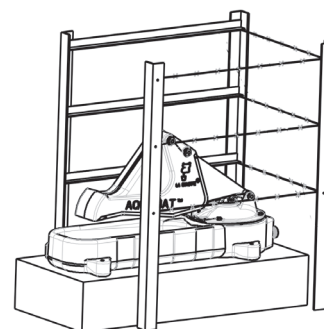
- Water output of 1 pint per stroke
- Pumps water up to a depth of 7m (23") (1 foot vertical equals 10 feet horizontal)
- Convenient for 15 head of big cattle and horses.



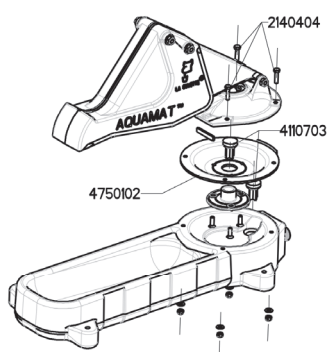
- Avoid sharp bends and elbows



- Obligatory strainer with non return valve



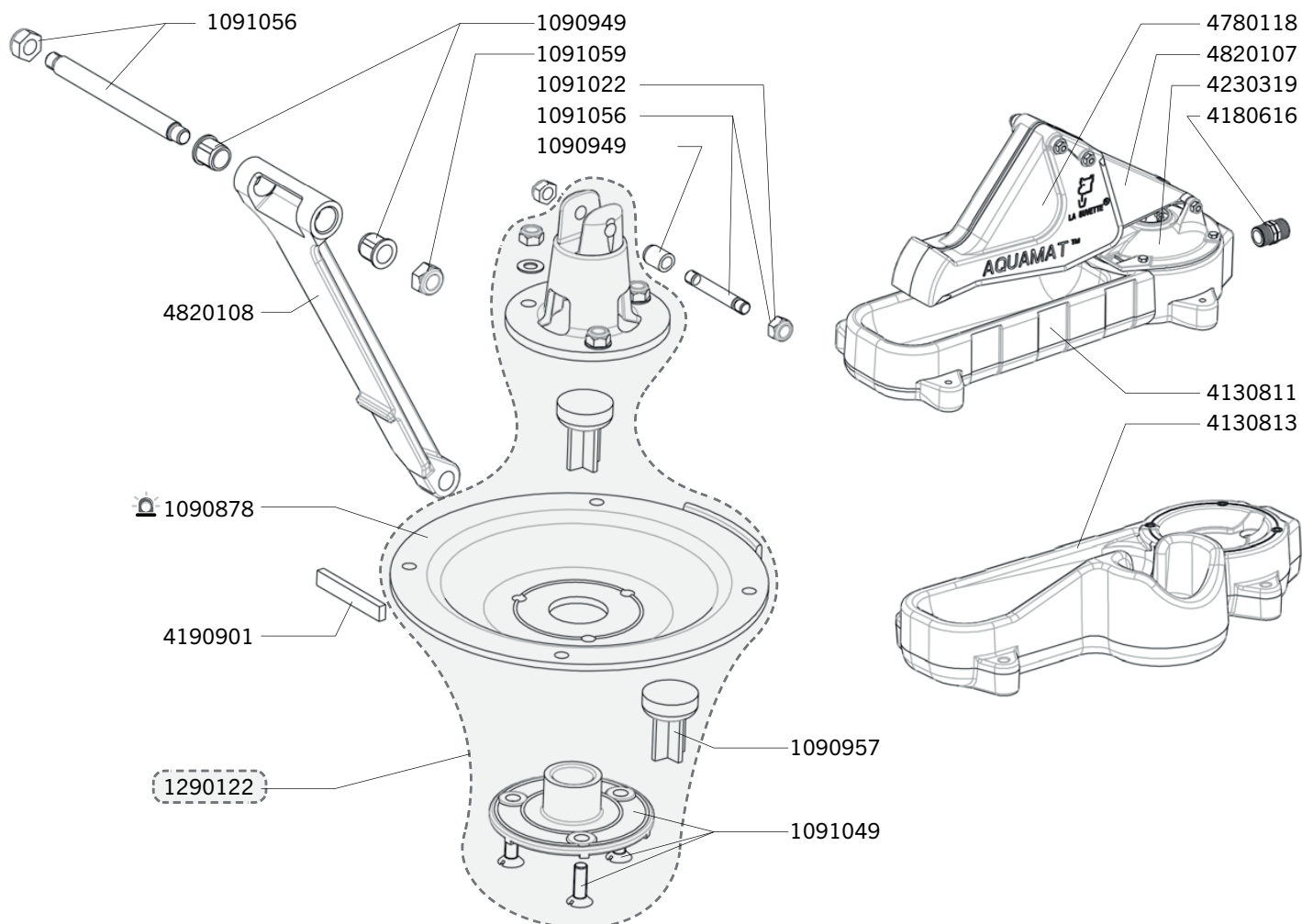
- Access should be restricted to one animal at a time






- The pump never needs to be oiled or greased
- In winter the pump should be taken indoors
- If the pump does not draw water:

Disconnect the pipe and check the pump for suction by operating it with one hand while holding your other hand to the intake fitting.

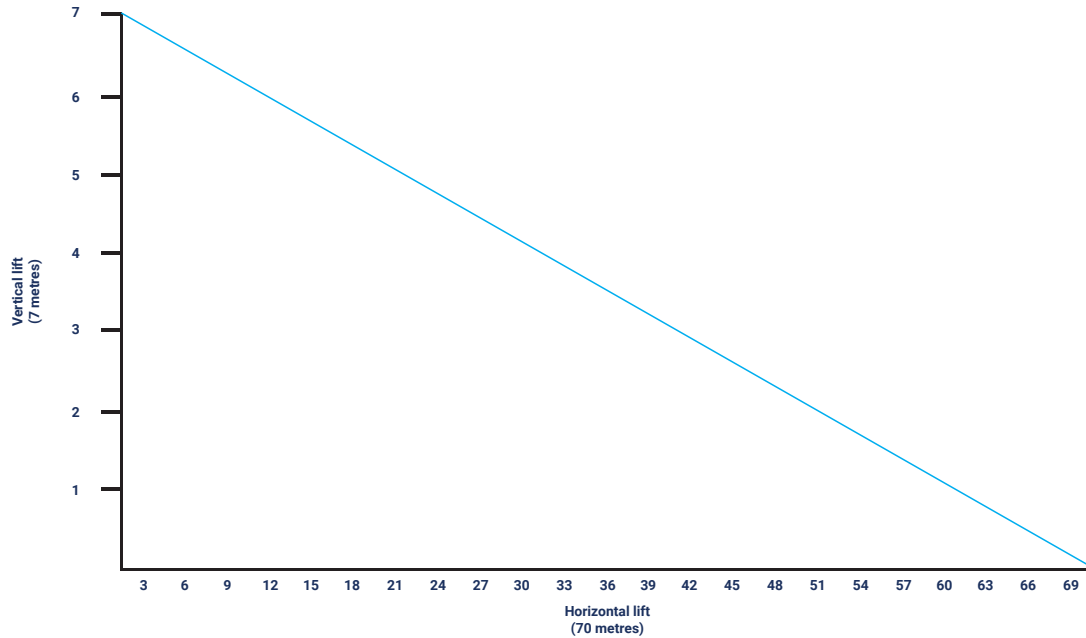
- If you have suction: the pipe or the foot valve needs cleaning
- If you do not have suction: undo the 4 bolts ref 2140404 and examine the diaphragm ref 4750102 and the two valves 4110703. Clean or replace as necessary. (When re-installing, do not tighten excessively and check the pump)



Exp	Code	Name
	1090878	COQUE 1 MEMBRANE AQUAMAT 1&2
	1090949	CASE 1 SET OF 8 AQUAMAT 2 RINGS
	1090957	AQUAMAT 2 NON-RETURN VALVE SHELL
J+5	1091022	BAG OF 10 STAINLESS STEEL LOCK NUTS M8
J+1	1091049	AQUAMAT MEMBRANE TRAY + BOLTS
J+1	1091056	AQUAMAT 2 AND VA SHAFT + NUT SET BAG
J+5	1091059	BAG OF 10 M10 STAINLESS STEEL LOCK NUTS
J+1	1290122	ENS PISTON/MEMBRANE AQUAMAT TTES VERSIONS
J+1	4130811	BAC AQUAMAT I ET II
J+1	4130813	BAC AQUAMAT II VA
J+5	4180616	MANCHON MM 1"/1" PLASTIQUE
J+5	4190901	RECT BRASS BAR AQUAMAT ALL VERSIONS
J+1	4230319	AQUAMAT CAST IRON COVER
J+1	4780118	AQUAMAT II PUSH BUTTON PAINTED
J+1	4820104	CONNECTING ROD WITH AQUAMAT II RINGS
J+1	4820108	AQUAMAT II LINKAGE
Old versions		Aquamat 1 (Before 2004)
J+5	1090781	PACK OF 13 + 7 AQUAMAT 1 WEAR RINGS
J+5	4650601	ROD SETS + SHAFTS + BUSHINGS + AQUAMAT 1 NUTS



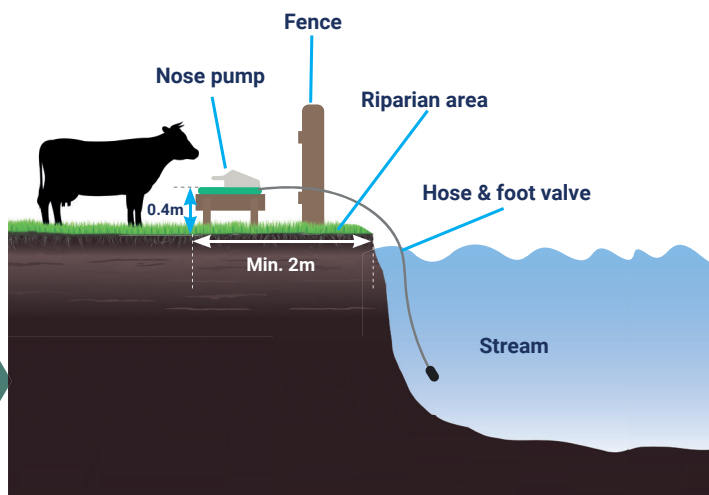
Vertical lift of the pump



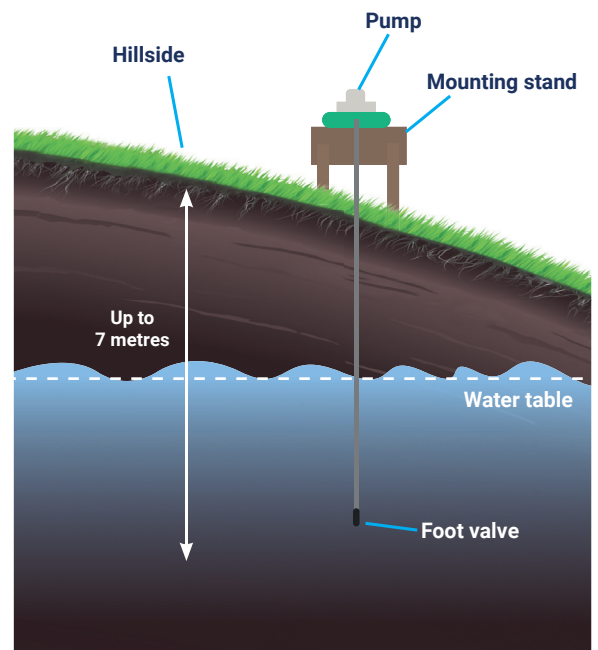
Rough installation drawings

- A: Traditional water source extraction
B: Using underground water source

A:



B:



Catchment Sensitive Farming

Aquamats deliver a practical solution to enable farmers and land managers to take voluntary action to reduce diffuse water pollution from agriculture to protect water bodies and the environment.

Are you in a priority catchment?

Capital Grant Scheme

Are you eligible?

The Capital Grant Scheme is available in 79 priority catchments and is targeted at holdings within specific areas of these catchments.

For more information log on to:

www.naturalengland.org.uk/ourwork/farming/csf/default.aspx



Frequently Asked Questions

Q: How long does it take livestock to learn to use Aquamat nose pumps?

A: It takes about 5 minutes!

Q: Once I install a pump on a platform and connect the hose and foot valve, how do I get the pump started?

A: The Aquamat is self priming. Just submerge the foot valve in your water source so that it is weighed down, but above the bottom slit - we suggest tying the foot valves to the top of a concrete block, and because this foot valve is spring loaded, it can be placed in the water source at any angle. Work the pump lever with your hand until water is brought up into the drinking bowl. You need to leave the pumps with several strokes of water in the drinking bowl to act as "bait" to attract thirsty animals. After the first animal finishes drinking, the last back stroke of the pump lever brings more "bait" water into the bowl to attract the next animal. Thus, there is always some "bait" water left in the drinking bowl.

Q: What is the estimated life of the rubber pump diaphragm?

A: The factory estimate is two to five years, depending upon how many cattle use the pumps.

Q: Are the nose pumps frost proof?

A: NO. Nose pumps are designed to provide water for spring through to autumn. Nose pumps can be damaged if an animal attempts to get water from a frozen pump.

Q: Can the pumps be left out over the winter?

A: Yes, but we do not recommend it. We recommend that through the winter, the pump and hose be brought in under cover and drained of water.

Q: How long does it take pigs to learn to use the Aquamat?

A: Two seconds!

Q: Can the Aquamat be used by sheep and goats?

A: No.

Q: Are there any laws regarding the extraction of water for livestock?

A: Consult your local environmental agency about licences and CAMS (Catchment Abstraction Management).